



2023

ANNUAL REPORT

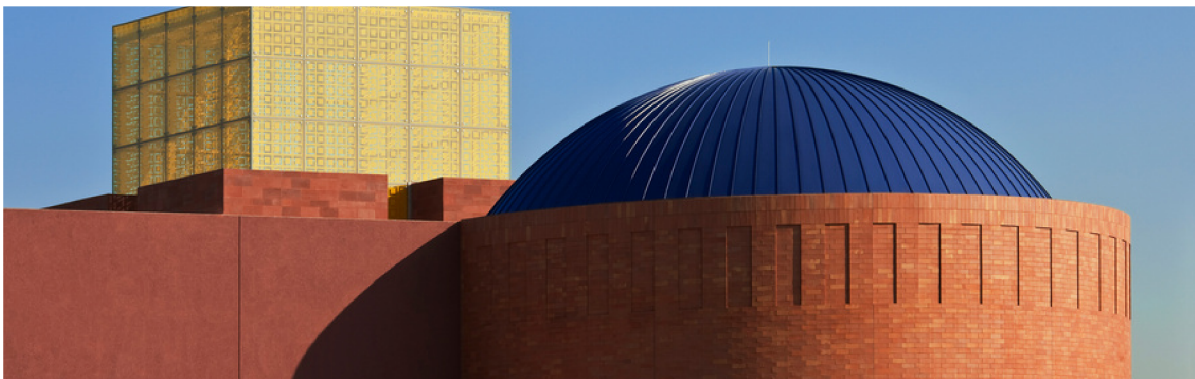
FWMUSEUM.ORG



FORT WORTH MUSEUM
SCIENCE AND HISTORY

TABLE OF CONTENTS

1	Vision & Mission
2	Message from the President
3	Senior Leadership
4	Message from the Board Chair
5	Board of Trustees
8	About the Museum
9	A Bright Future
10	Museum at A Glance
11	Community Partners
12	Special Events
21	Education Programs
22	Exhibits
23	New Additions
24	Corporate Sponsors
25	In Kind Partners
26	Foundation Support
27	Individual Support



VISION

Transforming lives through extraordinary learning environments.

MISSION

Dedicated to lifelong learning and anchored by our rich collections, the Fort Worth Museum of Science and History engages our diverse community through creative, vibrant programs and exhibits interpreting science and the stories of Texas and the Southwest.



MESSAGE FROM THE PRESIDENT

Welcome to the Fort Worth Museum of Science and History's 2023 Annual Report - a testament to a year marked by resilience and innovation.



In 2023, our exhibitions ignited curiosity and fostered meaningful conversations, reaching beyond our walls to impact communities and schools. Education remains central to our mission, and expanded outreach programs have allowed us to bring the joy of discovery to more children.

None of this would be possible without your steadfast support. Your belief in our mission fuels our pursuit of excellence.

As we reflect on the past, we look forward to shaping a future where curiosity knows no bounds. Thank you for being an integral part of our journey.

Sincerely,

A handwritten signature in black ink that reads "Regina Faden". The signature is written in a cursive, flowing style.

Regina Faden, Ph.D.

President, Fort Worth Museum of Science and History

SENIOR LEADERSHIP



Regina Faden, Ph.D. – President

Ashley Hansen - Chief Financial Officer

Mark Hilderbrand - Director of Security & Facilities

Tammy McKinney - Vice President of Development & Marketing

Leigh Ann Naylor - Director of History Collections

Danae Perry – Manager of Accounting & Retail Operations

Nicole Price - Human Resources Director

Amber Shive - Vice President of Education

Leishawn Spotted Bear - Director of Science Collections

MESSAGE FROM THE BOARD CHAIR



For more than 80 years, the Museum has been one of Fort Worth’s treasured gems. The Museum’s mission – to promote lifelong learning and to engage our diverse community through creative, vibrant programs and exhibits interpreting science and the stories of Texas and the Southwest – is at the heart of all we do.

As an accredited institution, the Museum adheres to the highest industry standards. We take seriously our pledge to ensure that our state-of-the-art facility and educational programming are available to all children regardless of socioeconomic status. Through field trips, family museum nights, and numerous community and school outreach activities, we will continue to inspire generations of future scientists, innovators, and their families.

The Board of Trustees wholeheartedly supports the work that the Museum is doing to educate our community. We all look forward to seeing you at the Museum this coming year.

Regards,

A handwritten signature in black ink that reads "Marianne Auld". The script is fluid and cursive.

Marianne Auld
Managing Partner, Kelly Hart
Board of Trustees Chair, Fort Worth Museum of Science & History

BOARD OF TRUSTEES

Lorene Agather	<i>L Marketing Consultants</i>
Russ Anderson	<i>Briggs Freeman Sotheby's International Realty</i>
Mike Atkinson	<i>Advanced Mobile Filtration Services, LLC</i>
Marianne Auld (Chair)	<i>Kelly Hart</i>
Stephanie Bird Baker	<i>Bird Family Foundation</i>
Brandon Bledsoe	<i>Amegy Bank</i>
John Boswell	<i>Cattle Raisers Foundation</i>
Roy Brooks	<i>Tarrant County Commissioners Court</i>
Neil Geurin	<i>American Airlines</i>
Ryan Harrington	<i>Trinity Healthcare, LLC</i>
Gary Havener	<i>Havener Companies</i>
Anette Landeros	<i>Fort Worth Hispanic Chamber of Commerce</i>
Ashley MacNamara	<i>Community Volunteer</i>
Louella Martin	<i>LBM Investments</i>
Kit Tennison Moncrief	<i>Cattle Raisers Foundation</i>
Michael Parks	<i>Higginbotham</i>
Jennifer Rosell	<i>Kelly Hart</i>
Benjamin Rosenthal	<i>Standard Meat Company</i>
Lynny Sankary	<i>Community Leader</i>
Whit Smith	<i>WhitneySmith Company</i>
Benson Varghese	<i>Varghese Summersett, PLLC</i>
Brad Wharton	<i>CedarTop Capital</i>

ABOUT THE MUSEUM



On April 21, 1941, the State of Texas received a charter aimed at establishing the Fort Worth Children’s Museum. The objectives of this new institution were outlined as follows: to serve as a repository for geological, biological, and zoological collections; to foster the dissemination of knowledge and appreciation for history, art, and science; to safeguard items of historical, artistic, and scientific significance; and to offer accessible instruction and opportunities for aesthetic enjoyment.

The museum's roots trace back to 1939 when the local council of Administrative Women in Education initiated a study on children's museums, contemplating the creation of one in Fort Worth. Two years later, the charter was officially filed, but it took almost four years to secure a physical location. With support from the city's school board, the museum opened its doors in early 1945 within two rooms at De Zavala Elementary School.

In 1947, the museum relocated to the R.E. Harding House at 1306 Summit, experiencing continuous growth in both size and popularity. Within three years, two significant entities emerged: The Ladies Auxiliary of the Fort Worth Children's Museum (Museum Guild) and "The Frisky and Blossom Club," the precursor to Museum School®. The need for a more substantial facility became evident, leading to the groundbreaking for a new building in 1952. On January 25, 1954, the museum inaugurated its new home at 1501 Montgomery Street, and the following year witnessed the opening of the Charlie Mary Noble Planetarium, the region's first public planetarium.

In 1968, the institution underwent a name change to the Fort Worth Museum of Science and History, broadening its appeal to adults as well. The addition of the Omni Theater in 1983, the first IMAX® dome theater in the Southwest, significantly contributed to the museum's success on a global scale. In 2009, architects Legorreta + Legorreta of Mexico City finished a new building for the Museum, seamlessly integrating into the Cultural District with a new address at 1600 Gendy Street.

With each substantial change in its name, location, size, and scope since 1941, the Fort Worth Museum of Science and History affirmed its enduring commitment to education and innovation. With a forward-looking approach, the museum continues to achieve remarkable milestones and contribute significantly to the cultural and educational landscape. Its commitment to fostering scientific curiosity and understanding is reflected in the engaging exhibits housed within its 166,000 sq. ft. facility. DinoLabs and DinoDig, Innovation Studios, the Children's Museum, Energy Blast, and the Cattle Raiser's Museum collectively provide a dynamic and interactive learning environment for visitors of all ages.

The museum's Havener Gallery remains a vibrant space for changing exhibits, showcasing contemporary themes and cutting-edge discoveries. Embracing advancements in technology and education, the institution has adapted to the evolving needs of the community, offering innovative programs and experiences that captivate the imagination. Its annual attendance, exceeding 270,000 guests, attests to its continued popularity and impact.

Notably, the Fort Worth Museum of Science and History remains a leader in collaborative initiatives, partnering with other museums and science centers to bring diverse and world-class exhibits to the community. The museum has become a hub for cultural exchange and intellectual exploration, enriching the lives of visitors and fostering a deeper appreciation for the sciences and humanities.

A BRIGHT FUTURE



As the museum continues to evolve in the 21st century, it remains a cornerstone of the cultural district, connecting with neighboring institutions like the Will Rogers Center, Dickies Arena, and the National Cowgirl Museum and Hall of Fame. Its presence extends beyond physical boundaries, reaching global audiences through its contributions to the field of science education and its recognition as a beacon of knowledge and inspiration in the modern era. The Fort Worth Museum of Science and History thrives as a vital and dynamic institution, ensuring that its legacy of enlightenment endures for generations to come.

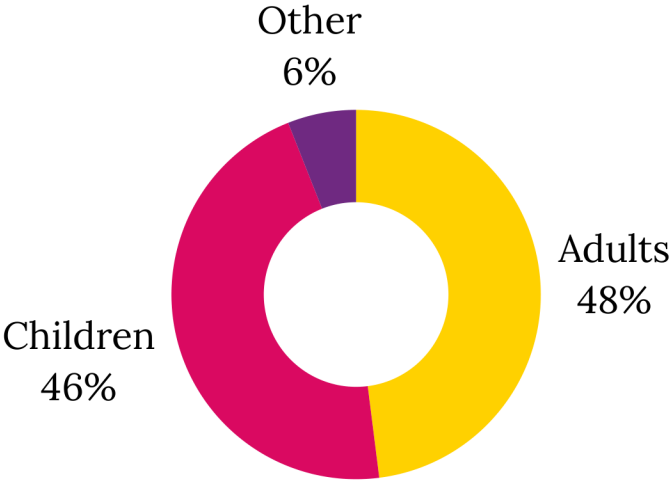
The Omni Theater, a key attraction since its opening in 1983, is undergoing a major renovation project to introduce the "Jane & John Justin Foundation Omni Theater." The renovation, led by Byrne Construction Services and Bennett Partners, will include an ADA-accessible space, a new lobby, and a state-of-the-art 8K LED viewing experience powered by Cosm Technology. This also involves interior updates, including a more accessible entry, comfortable seating, and a complete refresh. The all new 8K Digital LED Dome is the first of its size in a museum in the world.

MUSEUM AT A GLANCE

Museum Visitors
270,000

Member Households
4,000

TOTAL MUSEUM GUESTS



Employees
147

Volunteers
230+

COMMUNITY PARTNERS

501st Legion
A Wish with Wings
Action Behavior Center - ABA
AeroCARE
American Airlines C.R. Smith Museum
American Society of Civil Engineers
Arts Fort Worth
Ballet Folklorico Azteca
Ballet Folklorico de Fort Worth, Inc.
Bell Helicopter
Birdville High School
Braniff International
Collins College
Community Archives of Bellville and Hastings County
CR Smith Museum
Cradle of Aviation Museum
Dallas Children's Theatre
Dallas Paleontological Society
Dallas Zoo
Diamond Hills - Jarvis Fashion Design
Dinosaur Valley
Discovery Education
Elbit Systems of America
Fort Worth Aviation Museum
Fort Worth Botanical Garden/BRIT
Fort Worth Country Day
Fort Worth Gem and Mineral Club
Fort Worth Nature Center
Fort Worth Public Library
Fort Worth Zoo
Fossil Rim
Galliant Autism Care
Gideon Total Management Services
Grace Hula Dance Co.
Hebron High School
HSC College of Pharmacy
iCode
Jasmines Beat
Jewish Federation of Fort Worth and Tarrant County
Junior League of Fort Worth
Kidcreate Studio
Lamar University, Archives and Special Collections
Lockheed Martin
Mandalorian Mercs
Master Gardeners
McClatchy Publishing
Mensa
MHMR Tarrant County
Mike Guinn Entertainment
Miles Ahead, TX
Mouser
National Space Society of North Texas
New Strength Adaptive Fitness
Nolen Catholic High School
Oliver Nature Center
Rebel Legion
Ronald McDonald House
Snapology
Southwest Airlines Archives
Stephonia Storytelling
Tarrant County 4H
Tarrant County Education Foundation
Tarrant County Office of Historic Preservation and Archives
Texas Christian University
Special Collections, Mary Couets Burnett Library, Texas Christian University
Texas Wesleyan
Texas Woman's University
Trinity Valley School
University of Texas at Arlington
Special Collections, The University of Texas at Arlington Libraries
University of Texas at Dallas
Vintage Flying Museum
Visit Fort Worth
West 7th Wool
Wormspit.com
Wright State University Libraries' Special Collections and Archives

SPECIAL EVENTS



Noon Year's Eve
December 31, 2022



Fort Worth Stock Show & Rodeo
January 13, 2023 – February 6, 2023



Engineer's Week
February 22-26, 2023



Play On!
April 1, 2023



Bubble Fest
May 6, 2023



Dino Day
June 3, 2023



iCreate
July 29, 2023



Space Day
August 26, 2023



Mad Scientist Ball
September 29, 2023

EDUCATION PROGRAMS



Museum School

For nearly 75 years, the Fort Worth Museum of Science and History's Museum School, originally known as the "Frisky and Blossom Club," has led the way in accredited and licensed museum education. As the first of its kind in the United States, it has remained a pioneer in early childhood education. Today, it stands as a national model for informal science education, blending natural and physical science, history, anthropology, art, music, and literature in playful learning environments. The curriculum evolves weekly, offering diverse topics and activities that take children on engaging journeys of investigation and discovery, covering everything from individual animals to habitats and the interdependence of living things.

With extended-day classes integrating engineering concepts, the Museum School ensures developmentally appropriate learning experiences, fostering young minds to dream of careers ranging from astronauts to paleontologists.



PROGRAMS

Grant Programs

The Legacy program collaborates with four elementary schools' Pre-K and Kindergarten classes in Fort Worth ISD, including Carroll Peak, E.J. Briscoe, Morningside, Van Zandt Guinn, and T.A. Sims. Operating from October to May over 28 weeks, with 14 visits to the Museum and 14 in-class sessions for each class, the program also includes one Family Museum Night per school for PreK3 through 5th grade. Built on the Fort Worth Museum Preschool's foundation, the curriculum incorporates natural science and history collections, emphasizing developmentally appropriate practices for early childhood education.

The Extension Grant expands to eight schools within the Fort Worth Children's Partnership, including Legacy Schools and Eastern Hills, SS Dillow, and Bill J. Elliot Elementary, targeting PreK3, 1st, and 2nd grades. Museum Educators visit each classroom monthly, with additional field trips and a focus on schools facing demographic challenges, such as low-income families and educational gaps. Results indicate high fidelity of implementation and positive effects on student growth in areas like language development, social cognition, and standardized test scores.

Leadership Academy Network

The Leadership Academy Network, a collaboration between Fort Worth ISD and Texas Wesleyan University, aims to enhance academic performance in five district schools: Como, John T. White, Maude I. Logan, and Mitchell Boulevard Elementary. Museum teachers deliver hands-on science and history enrichment lessons every Friday, emphasizing stamina, teamwork, and problem-solving through STEM activities. Aligned with the Museum School curriculum, these sessions deepen the exploration of topics through STEM challenges in each six-week period. The partnership has yielded positive results, with increased vocabulary, communication skills, and social-emotional development in early learners, fostering excitement for school attendance and participation in engaging activities.

PROGRAMS

Family STEAM Festivals

Family STEAM Festivals, initiated in 2007, provide interactive science, technology, engineering, art, and math activities for children and families at participating elementary schools. This popular program supports ongoing STEAM education, facilitates positive interactions between parents and teachers, and reinforces classroom curriculum. After the Museum's new building opened, the museum continued to reach beyond its walls, using a large box truck to bring hands-on science materials, demonstrations, and a portable planetarium to schools across Fort Worth. Events rely on school volunteers to facilitate activities, with at least 75% of participating schools being Title 1 schools and a high proportion of children classified as economically disadvantaged by the TEA. The program extends to various school districts in the Fort Worth area, fostering engagement in STEM education.



Family Museum Nights

Family Museum Nights offer schools a Night at the Museum experience, allowing students to bring their families for an exciting evening of exhibits, planetarium shows, science demonstrations, and live animal encounters. This program supports ongoing STEM education, encourages family engagement with immersive exhibits, and reinforces classroom learning. With no participant limits, the event is multigenerational, attracting younger siblings, parents, grandparents, aunts, uncles, and cousins. All attending families receive a coupon for a return visit. The program, supported by school volunteers, predominantly serves Title 1 schools, with at least 80% participation from economically disadvantaged children across multiple North Texas school districts.



PROGRAMS

Discovery Lab on Wheels

The Discovery Lab on Wheels program is the Museum's outreach program. Programs are broken up into two different categories: School-based Programs and Community Based Programs. The school-based programs serve students in pre-K through high school. This also includes afterschool and the Six Week Science Club programming. The community-based programs are broken into three different styles: Come and Go, Class Style, and Six Week Science Club. The community-based program serves libraries, community centers, retirement communities and local community festivals.



Hist-o-Meter: Engaging with History (Podcast)

This podcast brings listeners closer to local and state history, unveiling the treasures within our museum's diverse collection. Listeners will be immersed in the fascinating stories of Fort Worth, Texas, as we delve into our exhibits and explore the rich historical tapestry of the region. A new episode is released every month. The potential for growth is boundless with additional funding, we envision expanding our reach and impact with more episodes with engaging community participants. The program has steadily grown in popularity, captivating audiences with its compelling narratives. To ensure the podcast's continued success, support towards upgrading our editing setup would be immensely valuable.

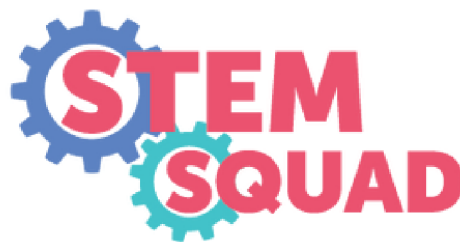


hist-o-meter
EN-GAUGE WITH HISTORY

PROGRAMS

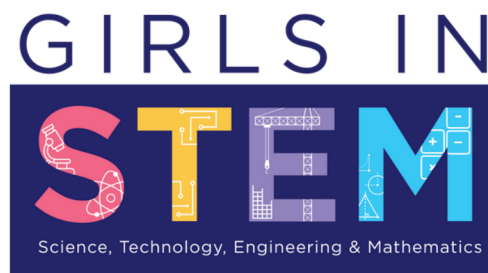
STEM Squad

For over 70 years, Museum School has excelled in informal science education, and STEM Squad extends this legacy to K-4th grades. Enthusiastic educators facilitate engaging classroom environments, using specimens and artifacts from the Museum's teaching collection. STEM Squad classes, designed for K-4th graders, meet during the Fall/Spring and summer months, exploring various engineering-focused topics with a creative twist. The sessions encourage hands-on experiences for students to construct their own knowledge of the world. Excitingly, STEM Squad delves into holidays, customs, and traditions through the lens of science, technology, engineering, art, and math.



Girls in STEM

Girls in STEM is a collaborative initiative between the Museum and local elementary campuses, aiming to inspire and empower young girls in 3rd-5th grade through immersive STEM experiences. This program fosters engagement with hands-on STEM activities that cultivate a deep understanding of STEM principles within the girls' everyday lives. With an emphasis on inclusivity, Girls in STEM is accessible to all participants without any financial obligation. Girls in STEM bridges gaps, sparks inspiration, and fosters a profound appreciation for STEM disciplines among young girls, ultimately contributing to a more diverse and vibrant landscape within the field.



PROGRAMS

Club de Ciencia para la Familia Bilingüe / Family Science Club in Spanish

Our Bilingual Family Science Club offers a highly effective, hands-on program for children ages 3-17 and their accompanying adults to work together in the exciting world of science, technology, engineering, art, and math (STEAM). This program is fully immersive with 90% Spanish language education for maximum understanding.



Bilingual Story Time

Our museum offers an educational program that uses bilingual storybooks to connect science and history topics. By listening to stories, visitors can improve their grammar, learn new vocabulary, and understand how stories work. We believe in promoting learning in all its aspects, for all ages. Our Bilingual Storytime is an interactive read-aloud session from a science or history-themed picture book. It is followed by a short demonstration or discussion related to the book's main concepts.



PROGRAMS

Sensory Time

Sensory Time, designed for families with individuals experiencing autism and developmental disabilities, provides a monthly Wednesday session and biannual Saturday events. The program creates a nurturing environment to cater to sensory needs, offering a unique opportunity for families to explore the museum in a safe, understanding, and accessible setting. It serves as a platform for guests and members with sensory sensitivities to connect with other families while discovering the Museum. Dedicated to enhancing support, Sensory Time aims to provide a space where families can experience the Museum with reduced sound and light interference.



Recollections

Tailored for individuals with Alzheimer's and Dementia, Recollections is a program designed to engage participants in the comfort of their homes or memory care facilities, alongside their dedicated caregivers. A collaboration between the Education and Collections departments, Recollections aims to spark engagement, foster meaningful conversations, and provide an intimate exploration of the Museum's collections and exhibits. Participants can choose to join virtually or in person, allowing stories to come to life and cherished memories to flourish in new ways. This program, rooted in the enduring power of art, culture, and shared human experiences, originated during the pandemic when the need for connection became more pronounced. There is potential for Recollections to expand into additional Memory Care Facilities.

PROGRAMS

Mission2Mars

Mission2Mars, a nationwide engagement program led by NASA and the Franklin Institute, fosters community partnerships around NASA's space exploration agenda. The initiative collaborates with local amateur astronomers to bring space-focused learning activities to community partners. Mission2Mars aims to create community-based ecosystems of engagement, particularly around NASA's Artemis lunar exploration program. The overarching goal is to inspire, engage, educate, and employ the next generation of explorers, with a specific focus on reaching marginalized populations in STEM fields, including people of color, low socioeconomic status populations, and low-resourced rural and urban communities.



Science in the Summer

Sponsored by GSK and facilitated by the Franklin Institute, this program enables the Museum to provide hands-on STEM activities for over 800 children from underrepresented populations in STEM careers each summer. In 2021, participating sites included various community centers, libraries, and camps such as Tarrant Area Food Bank, Como Community Center, and Camp Timberlake (Girl Scouts). The program's success in reaching diverse communities demonstrates its commitment to fostering STEM engagement and education among children from marginalized backgrounds.

PROGRAMS

Junior Curators Program

The Junior Curators, a summer program for 5th to 8th-grade students interested in science, history, education, and conservation, provides a behind-the-scenes view of museum operations. The program aims to teach students curator skills, offering hands-on experience working with the collections team to preserve specimens and artifacts. Participants collaborate with peers to create an exhibit showcased in the Museum, conducting research on a specific topic and developing a curatorial plan during the week-long camp. The program nurtures a passion for museum work and provides practical skills in curation.



Girl Scout Programs

This is an interactive and captivating program created in partnership with the Girl Scouts to instill young girls with the knowledge, skills, and passion to excel in the field of Science, Technology, Engineering, and Mathematics (STEM). The objective of this program is to foster curiosity, critical thinking, teamwork, and experiential learning, while enabling girls to earn different STEM-focused badges.



EXHIBITS

Permanent Exhibits



Plains Gallery
Opened November 4, 2022



Leonard's Department Store
January 25, 2024

Temporary Exhibits



Texas Rangers Bicentennial
January 13, 2023 – April 1, 2023



Step Into the Stock Show
January 13, 2023 – February 4, 2023



Cowtown Takes Flight
August 19, 2023 – August 2024

Traveling Exhibits



Life in One Cubic Foot
March 18, 2023 – June 11, 2023



Merry Christmas, Charlie Brown!
June 17, 2023 – August 20, 2023



Very Eric Carle
September 23, 2023 - January 7, 2024

NEW ADDITIONS

Galaxy Park Playground + Mural

October 8, 2023 - Grand Opening

November 2, 2023 - “Cosmic Rodeo” Mural Finished

DinoDig Renovation

Fall 2023

Sensory Additions

Fall 2023

ShopToo!

August 2022

Summit the Therapy Dog

Spring 2023

Jane & John Justin Foundation Omni Theater

June 13, 2023 - Groundbreaking

Fall 2024 - Grand Opening



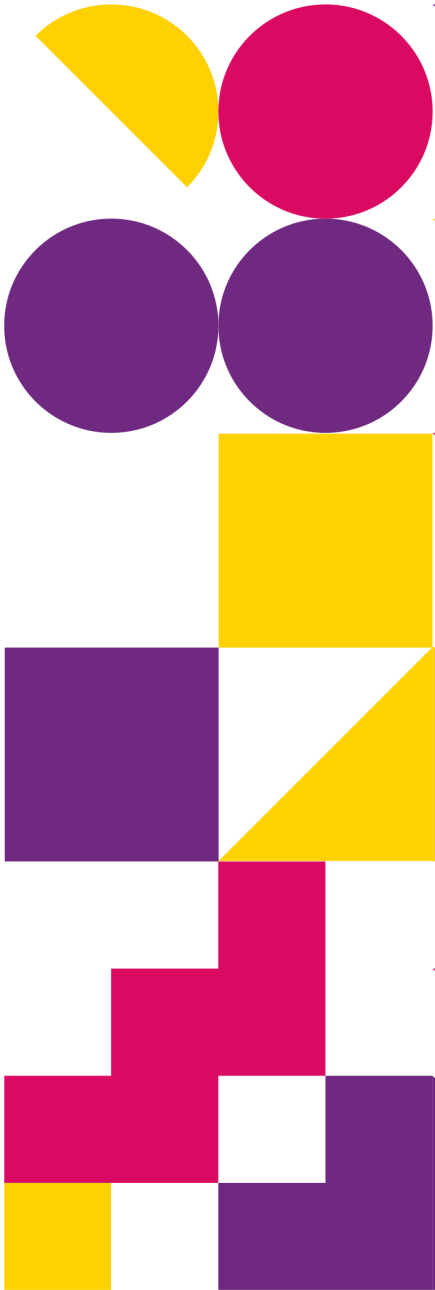
CORPORATE SPONSORS

Alpine Building Maintenance
Amarillo National Bank
Amegy Bank
Arts Fort Worth
Atmos Energy
Bank of America
Bennett Partners Architecture Interiors Planning
Briggs Freeman Sotheby's International Realty
Burns & McDonnell
Byrne Construction Services
City of Fort Worth
Cook Children's Medical Center
Dallas Fort Worth International Airport
Elbit America
Fort Accounting, LLC
Frank Kent Cadillac
Frost Bank
Gideon Toal Management Services
Graham Associates, Inc.
Higginbotham
Hillwood Development Corporation
JP Morgan Chase & Co.
Kelly Hart
Linbeck Group, LP
Lockheed Martin AEROCares
Lockheed Martin Aeronautics Company
Luther King Capital Management
Mouser Electronics, Inc.
PlainsCapital Bank Wealth Management
The Projects Group
Southwestern Exposition and Livestock Show
Sproles Woodard L.L.P.
Tarrant Construction
Tarrant County
Texas Christian University
Texas Wesleyan University



IN KIND PARTNERS

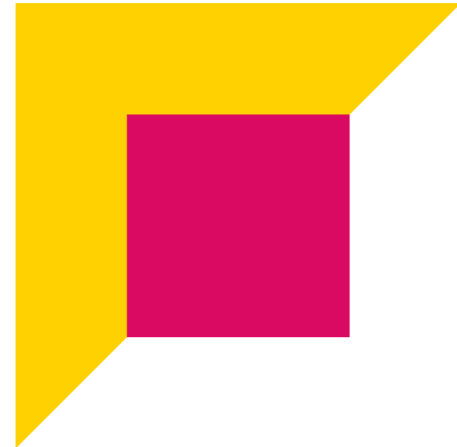
- Aloft Dallas Downtown
- Aloft Fort Worth Downtown
- American Airlines
- Arlington Today
- Blue Bell Ice Cream
- Bob's Steak & Chop House Fort Worth
- Bowie House Hotel, Auberge Resorts
- Cadillac Wines
- Cattle Raisers Museum
- Charitable Golf of Dallas
- Charles Schwab Challenge
- Chill-N Nitrogen Ice Cream
- Crown Block Dallas
- Defender Outdoors Shooting Center
- DeLuca Gaucho Pizza & Wine
- Dennett Construction
- Dickies Arena
- Enchiladas Olé
- Fitzgerald
- Fort Worth Catering/Galligaskins
- Fort Worth Magazine
- Fort Worth Plastic Surgery Med Spa
- Fort Worth Weekly
- Heim Barbecue
- Hotel Dryce
- Hotel Revel
- Jimmy Joe Jenkins and Bradly Kent
- Justin Brands
- M. L. Leddy's
- Magdalena's Catering & Events
- Martin House Brewing Company
- Miles & Miles Outfitters
- Omni Fort Worth Hotel
- Panther City Media Group
- Performing Ads
- PurpleCare
- Reata Restaurant
- Saddleback Leather Company
- Sanford House Inn and Spa
- Sandman Signature Hotel Downtown Fort Worth
- Taco Heads
- The Capital Grille Fort Worth
- The Crescent Hotel
- The Hotel Drover
- Tierra A Taza Coffee Cart
- Visit Fort Worth



FOUNDATION SUPPORT

Alcon Foundation
Carol J. and R. Denny Alexander Foundation
The Paul E. Andrews, Jr. Foundation
Association of Desk and Derrick Clubs Foundation
C.B. Baird, Jr. Foundation
Bird Family Foundation
Meta Alice Keith Bratten Foundation
William and Catherine Bryce Memorial Fund
Amon G. Carter Foundation
Colonial Country Club Charitable Fund
Corning Incorporated Foundation
Joe and Jessie Crump Fund
Katrine M. Deakins Charitable Trust
Kaleta A. Doolin Foundation
Dream Park Foundation
Ecolab
J.E.S. Edwards Foundation
Fash Foundation
Folsom Point Charities
Franklin Institute
Edith Winter Grace Charitable Trust
The Valentin Gracia, MD Family Foundation
Lyda Hill Foundation
Virginia Hobbs Charitable Trust
The M.R. & Evelyn Hudson Foundation
Humanities Texas
The Hyde Foundation
Jackson Family Foundation
Jane and John Justin Foundation
Carl B. and Florence E. King Foundation
Mary Potishman Lard Charitable Trust
Leonards Museum Fund
Web Maddox Trust
McCord Family Charitable Fund
Adeline and George McQueen Foundation
The Miles Foundation
Molyneaux Charitable Foundation
Robert D. and Alma Moreton Foundation
The Morris Foundation
North Texas Community Foundation
Once Upon a Time Foundation
The Pangburn Foundation
Martha Sue Parr Trust
A.M. Pate, Jr. Charitable Trust
Minnie Stevens Piper Foundation

Leo Potishman Foundation
R4 Foundation
The Rainwater Charitable Foundation
Ann L. & Carol Green Rhodes Charitable Trust
Sid W. Richardson Foundation
The Arch and Stella Rowan Foundation
The Ryan Foundation
William E. Scott Foundation
Frances C. and William P. Smallwood Foundation
Smithsonian Institution
Sook Family Foundation
The Stallings Foundation
TechBridge Girls
Andy and Nancy Thompson Foundation
Waldron Family Limited Partnership
Walmart Foundation
Winn Family Foundation



INDIVIDUAL SUPPORT

Carol and Denny Alexander
Cindy and Russell Anderson
Anonymous
Marianne Auld and Jimmy Coury
Stephanie and Cody Baker
Ramona and Lee Bass
Sid Richardson Bass
Silvia and Bill Birk
Connie Beck and Frank Tilley
Elizabeth and John Boswell
Courtney Brooks
Kay and Ralph Campbell
Elizabeth and Carder Brooks
Anne and Orlando Carvalho
Patricia and Tom Chambers
Kelly and Gerry Cumpiano
Kimberly and Glenn Darden
Shirley and John Henry Dean, III
Diana and Edward Dent
Kimberly and Joseph DeWoody
Suzanne and Edmund Dieth
Laura and Alfred DiStefano
Ginger and John Dudley
Carol and James Dunaway
Garett Essl
Felice Girouard
Karen Grant and Dan Roberts
Cami and John Goff
Sally Hale and Gail King
John Hallam
Ashley and Thomas Hansen
Nissa and Ryan Harrington
Judelle and Gary Havener
Erin Davis-Heineking and Christian Heineking
Lyndsay and Justin Hoover
Joni and Dwight Horton
Jane and Marc Jacobson
Diana and Hunter Johnson
Jennifer and Brian Krafft
Paula and Robert Lansford
Katherine and Bennibi Lao
Mary Ralph Lowe
Monica Luera
Louella Martin
Jessica and Thomas McCraw

Tammy and Ty McKinney
Patricia and William Meadows
Elise and Allen Mederos
Nesha and George Morey
Noel and David Nolet
Diane and Michael Parks
Bonnie and Alan Petsche
Gail Rawl
Jane Rector
Jere and Douglas Robertson
Madolin and Benjamin Rosenthal
Judy and Brad Rupay
John P. Ryan
Lynny Sankary
Tricia and Jon Schwartz
Barbara and Thurman Schweitzer
Cyndi and William Seger
Anne and Robert Semple
Gretchen and Whit Smith
Mariette Smithen and Broderick Hawkins
Beverly and John Snyder
Dr. Theodore S. Takata
Courtney and Brian Tulbert
Cye and Kyle Wagner
Melinda and Stephen Winn



CONTACT US



817-255-9300

1600 Gendy Street

Fort Worth, Texas 76107

fwmuseum.org

@FWMSH #FWMSH

