

Omni Theater Educator Resource

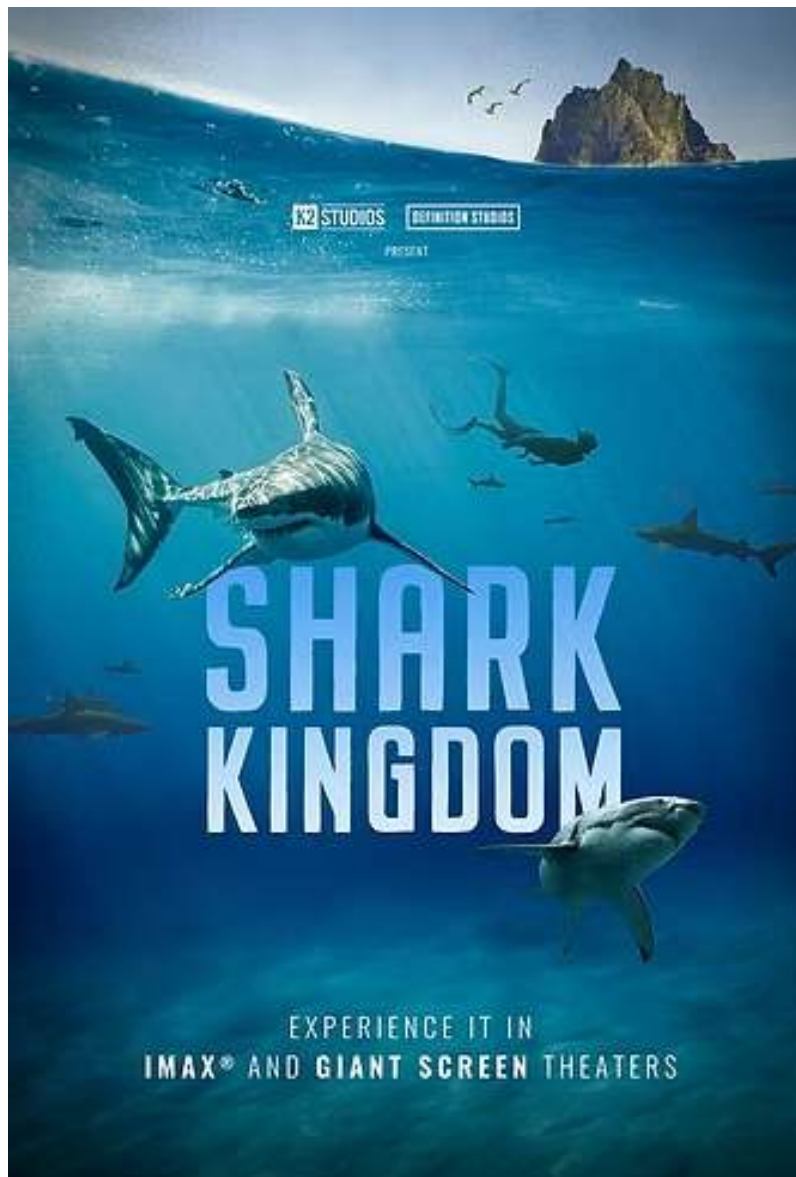
Fort Worth Museum of Science and History

FILM OVERVIEW

Shark Kingdom takes students on an immersive underwater journey into the world of sharks, revealing the beauty, complexity, and importance of these often-misunderstood ocean predators. Filmed for the giant screen experience, the movie places viewers alongside a wide range of shark species in vibrant marine ecosystems around the globe. From coral reefs to open ocean environments, students witness firsthand how sharks move, hunt, and interact within their habitats.

Throughout the film, students explore the remarkable adaptations that have allowed sharks to thrive for more than 400 million years. The film highlights their specialized senses — including electroreception, acute hearing, and an extraordinary sense of smell — as well as their unique physical features such as cartilage skeletons, multiple rows of teeth, and hydrodynamic bodies built for efficiency. These biological traits provide rich connections to life science concepts such as structure and function, adaptation, food webs, and predator-prey relationships.

Shark Kingdom also emphasizes the ecological role sharks play as apex and keystone species. By regulating prey populations and maintaining balance within marine ecosystems, sharks contribute to ocean health and biodiversity. The film introduces students to ongoing marine research and conservation efforts, helping them understand current environmental challenges such as overfishing and habitat degradation. This provides strong connections to environmental science standards and discussions about human impact on ecosystems.



Designed to inspire curiosity and stewardship, Shark Kingdom encourages students to reconsider common misconceptions about sharks and to see them as vital components of Earth's oceans. The immersive Omni experience enhances engagement, making complex scientific concepts accessible and memorable. Teachers may wish to prepare students by reviewing marine ecosystem vocabulary and following up with discussions about conservation, adaptation, and the role of scientific research in protecting biodiversity.

CLASSROOM CONNECTIONS

- Reinforces structure and function by highlighting how sharks' physical and behavioral adaptations support survival.
- Supports understanding of predator-prey relationships, food webs, and ecosystem balance within marine environments.
- Connects to concepts of biodiversity and the role of apex species in maintaining healthy ecosystems.
- Addresses human impact and conservation, encouraging students to examine environmental challenges affecting oceans.
- Promotes scientific inquiry skills, including observing, analyzing evidence, and constructing explanations based on real-world science.

For more educator resources & classroom activities, visit:

<https://www.sharkkingdomfilm.com/>



Extension ideas for teachers:

Build a Marine Food Web Model:

Have students create a visual food web that includes producers, primary consumers, and sharks as apex predators. Then remove sharks from the model and discuss the impact on the ecosystem.

Ask students, "If sharks were removed from an ocean ecosystem, how might the balance of that ecosystem change over time? Use evidence about food webs and predator-prey relationships to support your reasoning."

TEKS:

2ND: 12B, 13B

3RD: 12B, 13A

4TH: 12, 12B, 13A

5TH: 12A, 12B, 12C

6TH: 12A, 12B, 12C

7TH: 12A, 12B

8TH: 12A

Environmental Systems- 5A, 10A

High School Biology- 11A, 12B, 13C, 13D



FORT WORTH MUSEUM
SCIENCE AND HISTORY