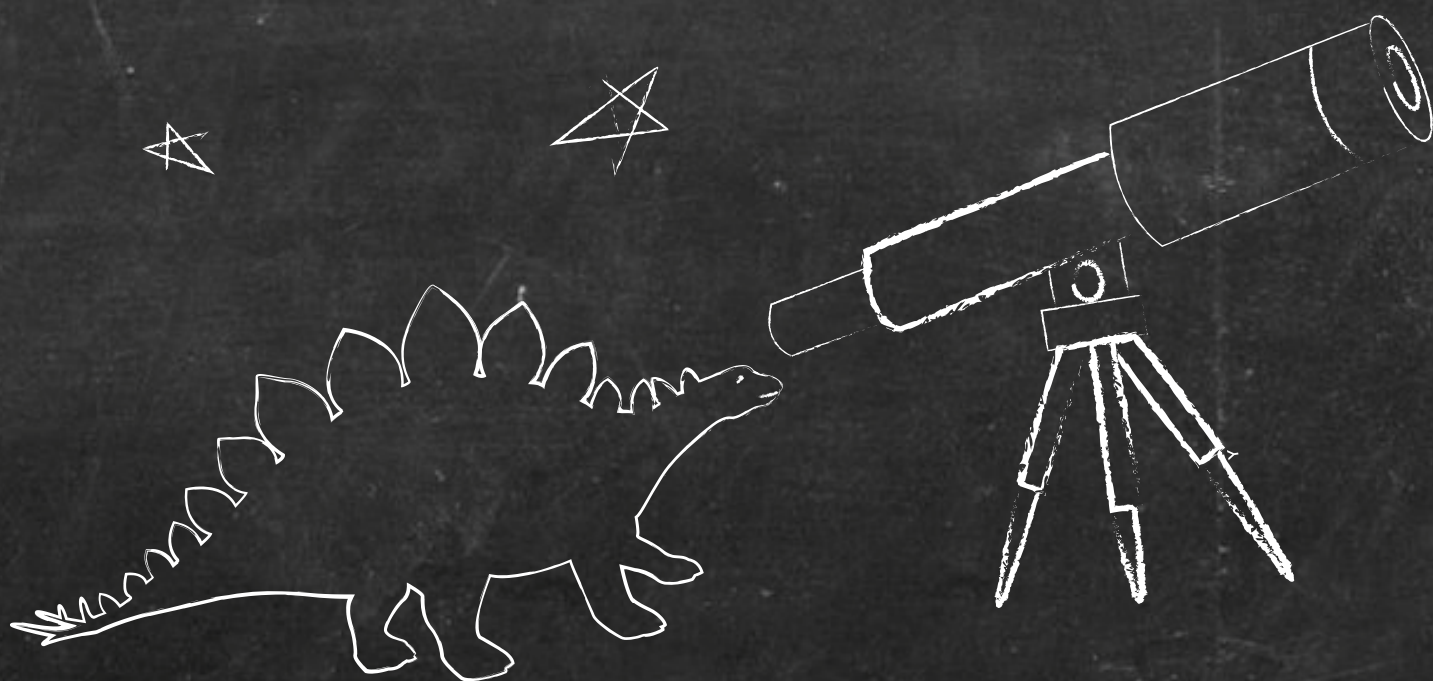




# SCHOOL PROGRAM PLANNER



2018-2019



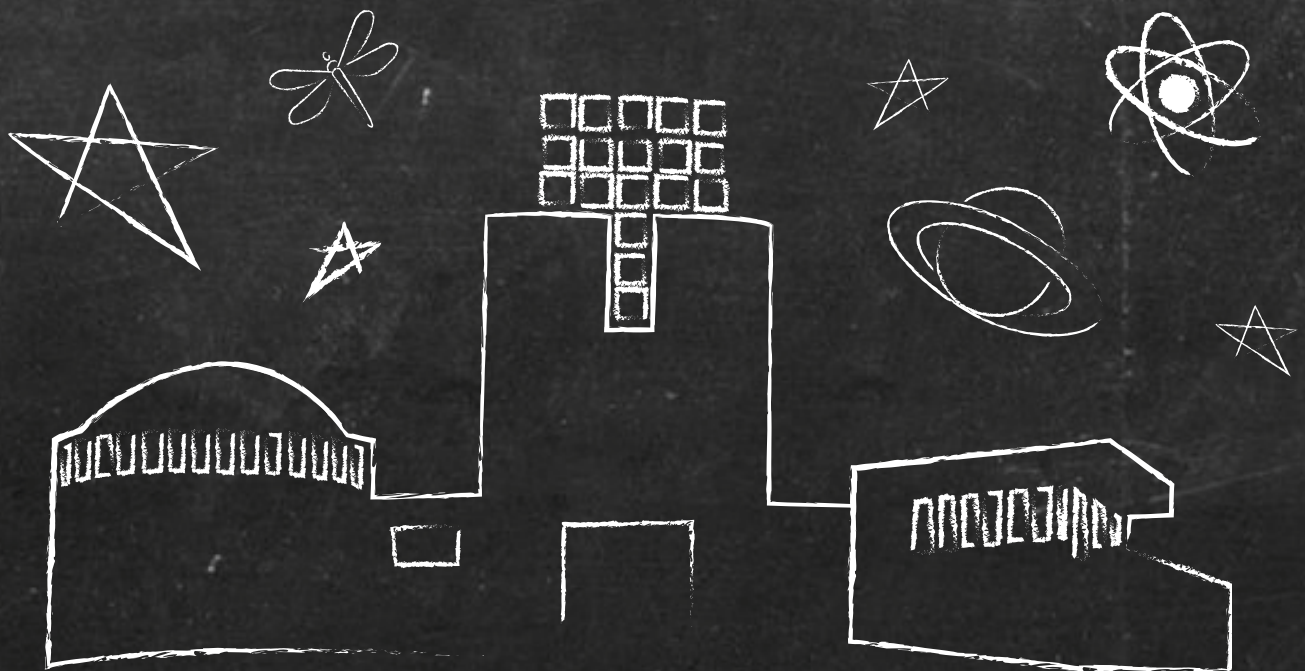
FORT WORTH MUSEUM  
SCIENCE AND HISTORY

# WELCOME

## to the 2018 - 2019 School Year!

Adventures abound this year at the Fort Worth Museum of Science and History. We are committed to bringing powerful first-hand learning experiences to you and your students that will enhance and support your curriculum. From our permanent and traveling exhibitions, Innovation Studios and Gallery to The Fort Worth Children's Museum Gallery, DinoLabs and Energy Blast your students will be engaged in learning.

Out-of-this-world adventures await you in the Noble Planetarium, and the Omni Theater will delight your students as they travel to new places. The Cattle Raisers Museum and the National Cowgirl Museum and Hall of Fame join us in providing a safe, accessible and flexible experience for you and your students.





## FAST FACTS

### Reservations

- Contact Group Services: **817-255-9440**.  
Monday-Friday 8:30 am-4:30 pm
- Group pricing: 15 or more; request must be made two weeks in advance
- We recommend booking four weeks in advance
- On-line booking:  
[fortworthmuseum.org/about-us/field-trips/](http://fortworthmuseum.org/about-us/field-trips/)

### What we need to know:

- **Omni Field Trips:** date preference, time preference (10:30, 11:30, 12:30) and film preference
- **Exhibit Field Trips:** date preference
- **Noble Planetarium Field Trips:** date preference, time preference and show preference
- Point person's name and contact information
- School name, complete address, phone number and ESC Region
- Number of students, grade level and any special needs

### What you will need to know:

- Required Chaperones: admitted free. Pre-K-K: 1 adult/6 students; Grades 1-12: 1 adult/10 students. Teachers are counted as a required Chaperone.
- Additional adults: Group Services will provide pricing
- Students must be accompanied by an adult at all times
- You will receive a reservation confirmation in an email
- We do not have space for lunch storage on-site. Please store

your lunches on the bus.

### Just a reminder:

- All exhibition and film dates are subject to change
- Member benefits and coupons may not be used for school visits
- You may picnic on the grassy areas around the Museum for lunch
- Please note that in case of inclement weather, the Museum has limited space for lunch. Space may not be available on high volume days.
- Paid parking began in the Cultural District May 1, 2010. More information on the fee structure can be found on the City of Fort Worth's parking guide:  
[culturaldistrictparking.com](http://culturaldistrictparking.com)

**A minimum of 15 is required for group rates.** Call our Group Services Department between 8:30am and 4:30pm Monday through Friday at 817-255-9440. Our helpful staff will make planning your visit easy for you. [fortworthmuseum.org/about-us/field-trips/](http://fortworthmuseum.org/about-us/field-trips/)



## SCHOOL GROUP PRICING

### COMBOS

Exhibits + documentary IMAX® film  
Exhibits + Noble Planetarium  
Exhibits + documentary IMAX® film  
+ Noble Planetarium

### STUDENT

\$8.50  
\$7.50  
\$11.00

### ADDITIONAL ADULTS

\$16.00  
\$14.00  
\$20.00

### SINGLE ATTRACTIONS

Exhibits  
Omni Theater – documentary IMAX® film  
Noble Planetarium

### STUDENT

\$5.00  
\$4.50  
\$3.00

### ADDITIONAL ADULTS

\$10.00  
\$6.00  
\$4.00

*Required Chaperones admitted free - PreK-K : 1 adult/6 students; Grades 1-12: 1 adult/10 students*

The Omni theater an IMAX® Dome brings engaging content to life for you and your students. The following films will be featured will be featured Fall 2018, and you won't want to miss out! **Book Now: 817-255-9440.**

## Dream Big: Engineering Our World

**Suggested Grade Level: 2 - 12**

*Dream Big* brings today's engineering marvels to life. You and your students will experience the challenges that designers are faced with as they design and build record-reaching skyscrapers, bridges that soar above the clouds and giant tunnel-boring machines navigating beneath our cities. You will discover how imagination and human invention and failure turn ideas and dreams into reality! **Macgillivrayfreeman.com/dream-big/**

## Dinos Alive

**Suggested Grade Level: 2 - 12**

*Dinos Alive* features the earliest dinosaurs of the Triassic Period to the monsters of the Cretaceous "reincarnated" life-sized for the giant IMAX® screen. Audiences will journey with some of the world's preeminent paleontologists as they uncover evidence that the descendants of dinosaurs still walk (or fly) among us.

## Born to be Wild

**Suggested Grade Level: K-12**

Travel to the lush rainforests of Borneo and across the rugged Kenyan savannah for an inspiring story of love, dedication and the remarkable bond between humans and animals. This film documents orphaned orangutans and elephants and the extraordinary people who rescue and raise them. **<https://orangutan.org/take-action/watch-imaxs-born-to-be-wild-3d/>**

## Dolphins

**Suggested Grade Level: K-12**

From the dazzling coral reefs of the Bahamas to the wind-swept seas of Patagonia, *Dolphins* takes audiences under the water's surface for a romp with inquisitive Atlantic spotted dolphins, acrobatic dusky dolphins and the familiar bottlenose dolphin of *Flipper* fame. **dolphinsfilm.com**

## D-Day: Normandy 1944

**Suggested Grade Level: 6-12**

Pay tribute to those who gave their lives for our freedom... A duty of memory, a duty of gratitude. **dday-normandy1944.com**

## Polar Express

**Suggested Grade Level: K-12**

Join Tom Hanks in this timeless classic of a young boy who embarks on a magical journey to the North Pole on the Polar Express. On his journey, he learns about bravery, friendship and the spirit of Christmas.

## Backyard Wilderness

**Suggested Grade Level: K-12**

*Backyard Wilderness* will capture the attention of you and your students with unexpected wonders of nature that is right under our noses...in our own backyard. The film spans a seasonal year and highlights a stunning array of wildlife images and behavior. Join Katie as she discovers the secrets of nature hidden in her own backyard, opening up a new world to her. This film will unlock your curiosity and encourage you to investigate nature surrounding us.



## FACTS AT A GLANCE

**Dates:** September, 2017 - May, 2018

**Time choices:** 10:30, 11:30, 12:30

**Fee:** \$4.50 per student

**Group Minimum:** 15

**Required Chaperones** (admitted free):

PK-K: 1 adult/6 students;

Grades 1-12: 1 adult/10 students.

**Additional Adults:**

Single Attraction \$6;

Combo Admission \$16

All students must be accompanied by a chaperone at all times.

Exhibits are on the move in the Museum, and we have something for everybody! We are committed to bringing you exhibits that not only support your curriculum, but also engage and delight your students.

## Permanent Exhibitions

### FIRST FLOOR

#### 9/11 Tribute Exhibit

**Suggested Grade Level: 3-12**

The Fort Worth Museum of Science and History is proud to be the designated caretakers of N-101 from the World Trade Center's North Tower.

#### Innovation Studios

**Suggested Grade Level: K-12**

There is something always going on in Innovation Studios and Gallery. From investigating shadows and colors to building and creating, this area is a great place for students of all ages to explore and learn.

New in Innovation Studios this year is the Current Science Studio. The Current Science Studio will host up-to-date news and information about science that matters right now. Students will learn about the science, technology and engineering behind what is happening in the news and how it all connects to work being done right here in DFW.

#### Fort Worth Children's Museum Gallery

**Suggested Grade Level: K-2**

The Children's Museum gallery targets our youngest field trip guests – through 2nd grade. The purpose is to encourage opportunities for children to play, knowing that at this age level, children are learning through play. Inside the Children's Museum is a healthy kids clinic, an infant/toddler developmental space, a parent resource room that also serves as a multi-purpose space, a family restroom, a nursing room for mothers and a natural science space. The natural science space exhibits one of the Museum's largest fully articulated specimens from the natural science collection – a Galapagos turtle, placed in a large dome so that young guests can see it from all angles.

#### Energy Blast

**Suggested Grade Level: K-12**

Energy Blast tells the dynamic story of energy resources

in North Texas through a unique combination of science and history, bringing physics, technology and innovative thinking to life as you are asked to explore geophysical formations, calculate drilling depths and directions and experiment with new resources.

#### DinoDig®

**Suggested Grade Level: K-12**

DinoDig®, an outdoor experience, began with the Museum in 1993. A historical, all-time favorite for young guests to the Museum, this updated exhibition invites guests to become a paleontologist as they discover the skills needed to uncover and excavate fossils in a reproduction of the Jones Ranch where the *Paluxysaurus jonesi* was discovered in 1982. DinoDig® features rock formations embedded with fossils based on the actual dig site.

#### DinoLabs

Inside DinoLabs, from bone to stone, ancient fossils reveal how dinosaurs roamed and fought, how they lived and died. Fossils are preserved remains of plants or animals more than 10,000 years old. DinoLabs is an interactive digital world where your creativity is unleashed! Movement and technology create an immersive space where anything is possible. A new addition to DinoLabs this year is DinoGlow™. DinoGlow™ is an opportunity for students to imagine and create the skin texture and coloration of Stegosaurus.

#### The Cattle Raisers Museum

The Cattle Raisers Museum is dedicated to preserving and celebrating the vital history and science of the cattle industry. The experience tells the story of the cattle industry from its origins among the West's early Spanish settlers, through the heyday of the legendary drovers, all the way to today's modern range technology. The exhibits show the important role Texas and Southwestern cattle raisers play in protecting natural resources as frontline stewards of land, livestock and wildlife.



## STORM SCHOOL



Wednesdays at 10:30am Grade Levels: 2-12

Learn about wild Texas weather with Jeff Jamison, CBS 11 meteorologist. This 45-minute program is available at no additional charge with your field trip exhibit admission. Ask your group sales representative how you can sign up for this exciting opportunity!

## Special Exhibitions

### Grossology and Animal Grossology

Now on Exhibit through January 6, 2019

Suggested Grade Level: K-12

#### Grossology

Welcome to the world of *Grossology: The (Impolite) Science of the Human Body*, a science-in-disguise exhibition where kids get the answers to many of the slimy, oozy, crusty, stinky questions they absolutely love to ask about the human body.

#### Animal Grossology

*Animal Grossology* turns gross topics such as slime, vomit and dookies into interactive, larger-than-life biology lessons. The exhibit harnesses kids' natural curiosity and teaches them how animals function.

#### El Día de los Muertos

For many people in Mexico and other parts of the world, November 2 is a very important day set aside to honor and remember relatives and friends who have passed away. This holiday is called 'Day of the Dead.' In Spanish the name is translated to Día de los Muertos. Skulls are an unofficial symbol of the holiday. Sugar skulls, calaveras de azucar, are not meant to be scary, like the ones you see at Halloween. The Day of the Dead skulls have smiles. This is because the memories of those that are gone are happy memories.



## FACTS AT A GLANCE

**Dates:** September, 2018 - May, 2019

**Time choices:** 10:30am - 5:00pm

**Fee:** \$5 per student for exhibits

**Group Minimum:** 15

**Required Chaperones** (admitted free):

PK-K: 1 adult/6 students;

Grades 1-12: 1 adult/10 students.

**Additional Adults:**

Single Attraction \$10

All students must be accompanied by a chaperone at all times.





Visit the Noble Planetarium with your students to experience live interpretation that brings artifacts to life, current views of the sky, interactive, curriculum-based programs investigating earth and our solar system and discovery learning guided by your students' questions. We even provide teacher resources to take home for post-trip activities!

## One World, One Sky: Big Bird's Adventure

**Suggested Grade Level:** PK-1

Join Big Bird, Elmo and their friend Hu Hu Zhu for a look at the stars. Take an imaginary trip to our Moon, learn how to find the Big Dipper and North Star and see how we all share the same sky. [sesameworkshop.org/initiatives/respect/sky](http://sesameworkshop.org/initiatives/respect/sky)

## Sun, Earth, Moon: Basic

**Suggested Grade Level:** 2-3

Learn about seasons, lunar phases, the sun, solar phenomena, auroras, gravity, meteorites and all the important elements of Earth.

## Sun, Earth, Moon: Advanced

**Suggested Grade Level:** 4-6

A more advanced look at seasons, lunar phases, the Sun, solar phenomena, auroras, gravity, meteorites and all the important elements of Earth.

## Live at the Noble: Our Solar System

**Suggested Grade Level:** 4-12

Humans have been gazing at the planets in wonder for thousands of years, but today we know more than ever about what those words are really like. Join us for a journey to the solar system's most exciting places.

## Texas Sky Tonight... LIVE!

**Suggested Grade Level:** 7-12

Navigate the stars, constellations and planets visible at the time of your visit, as well as the latest space news!

## FACTS AT A GLANCE

**Dates:** September, 2018 - May, 2019

**Time choices:** 10am, 11am, 12pm, 1pm

**Fee:** \$3 per student

**Group Minimum:** 15

**Group Maximum:** 80

**Required Chaperones** (admitted free):

PK-K: 1 adult/6 students;

Grades 1-12: 1 adult/10 students.

**Additional Adults:**

Single Attraction \$4;

Combo Admission \$14

All students must be accompanied by a chaperone at all times.



## MOBILE NOBLE

**Can't come to us?** We can come to you with the Mobile Noble Dome! We have a program just right for your grade level and curriculum.

### **One World, One Sky: Big Bird's Adventure**

Suggested Grade Level: K-1

### **This Is Your Captain Speaking**

Suggested Grade Level: K-2

### **Take Me to the Stars**

Suggested Grade Level: K-12

### **Earth, Sun, and Moon: Connections**

Suggested Grade Level: 4-6

### **Losing the Dark**

Suggested Grade Level: K-12

## FACTS AT A GLANCE

**Dates:** Available year-round

**To Book:** Contact planetarium staff at **817-255-9409** or email at

[stwidal@fwmsch.org](mailto:stwidal@fwmsch.org)

**Minimum:** 3 hrs/day

**Maximum:** 5 hrs/day

**Fee:** \$475 for 3-hour minimum plus \$125 per additional hour up to 5 hours plus small travel fee. Travel NOT limited to Tarrant County!

**Show Lengths:** Vary from 20 to 50 minutes, depending on student age





# BLAIR CENTER FOR PROFESSIONAL DEVELOPMENT



## FACTS AT A GLANCE

For additional information:  
contact School Services at  
817-255-9416  
[schoolservices@fwmsb.org](mailto:schoolservices@fwmsb.org)  
or visit  
[fortworthmuseum.org/about-us/  
professional-development/](http://fortworthmuseum.org/about-us/professional-development/)



The Blair Center for Professional Development at the Fort Worth Museum of Science and History is committed to providing educators with hands-on, minds-on interactive opportunities that will enhance your classroom practice. The Center is the home of the Texas Center for Inquiry, the 21st Century Learning Academy and Educator Workshops.

## TEXAS CENTER FOR INQUIRY

The Fort Worth Museum of Science and History is the home of the Texas Center for Inquiry. The institute provides educators with in-depth experiences in science inquiry through institutes, workshops, forums and follow-up coaching. The center's mission is to help curriculum specialists, teacher leaders and educators incorporate science inquiry into their curricula in ways consistent with the Texas Essential Knowledge and Skills (TEKS) and the Next Generation Science Standards. For additional information contact [schoolservices@fwmsb.org](mailto:schoolservices@fwmsb.org).

- Teaching Science through Inquiry
- Professional Development Design.....By Request

Generous support for the Texas Center for Inquiry has been provided by:

**ExxonMobil**



## 21ST CENTURY LEARNING ACADEMY

The 21st Century Learning Academy provides educators with in-depth experiences integrating STEM education into their classroom. The pedagogy, practices and implementation strategies taught will enhance professional practice and help build educators' understanding of how STEM-based instruction can benefit student learning. Educators will have the opportunity to implement strategies during the 21st Century Learning STEM Camp for Kids. For additional information: [schoolservices@fwmsb.org](mailto:schoolservices@fwmsb.org)

- 21st Century Learning Academy: Integrating STEM into the Classroom K-2
- 21st Century Learning Academy: Integrating STEM into the Classroom Grade 3-8

## EDUCATOR WORKSHOPS

Watch our website and Educator E-News letter for workshops provided throughout the school year at the Museum!

## CONTACT PROFESSIONAL DEVELOPMENT

Looking for campus or district staff development? We will customize professional development to your needs. For additional information: [schoolservices@fwmsb.org](mailto:schoolservices@fwmsb.org)

# OUTREACH PROGRAMS

DISCOVERY LABS ON WHEELS AND DISTANCE LEARNING

2018-2019

## DISCOVERY LABS ON WHEELS

Looking for a great field trip on your campus? Bring the Museum to your classroom with Discovery Labs on Wheels. We offer a variety of programs to fit your needs!

### School Based Programming

The Museum brings an educator to your school to lead your students in hands-on science activities. Each program runs 50 minutes and can take place in your classroom or science lab.

**Pricing:** \$125 per 50 minute program; class limit 30

\$750 for 6-8 classes; class limit 30

\$1125 for 9-12 classes; class limit 30

*Travel fees may apply to our programs outside our normal program area.*

### After School and Summer Programming

Looking to add something special to your after school or summer programming? Have a Discovery Labs on Wheels Educator visit your program. Our programs are perfect for a variety of audiences and age groups. After school programming is available after 3:00 pm during the school year and summer programming is offered from June 15 - August 15. **Pricing:** \$80/50 minute program \*Travel fees may apply

#### Program options include:

- Electrical Energy: Jolts and Volts
- Properties of Matter
- Investigations in Weathering Erosion and Deposition
- Magnets
- Bubbles
- Chain Reactions and Motion
- Water Wonders
- Animal Adaptations
- Gravity, Force and Motion
- Chemistry in a Bag

#### To see program options visit:

[fortworthmuseum.org/about-us/outreach-programs/](http://fortworthmuseum.org/about-us/outreach-programs/)

## DISTANCE LEARNING

Don't miss this opportunity to connect and interact live with the Museum's collections and team of experts without ever leaving your campus. Your students will explore science and mathematics with curators, staff and special guests through interactive videoconferencing. Our programs align with Texas Essential Knowledge and Skills and are customized to fit your grade level curricular needs.

### Popular Program Options:

- Resolve to Dissolve
- STEM in Action: Scribblebots
- Eggs Everywhere
- Adaptations Exploration: Owls
- All about Matter
- Geometric Transformations
- Investigations in Weathering, Erosion and Deposition
- Icy Science

## FACTS AT A GLANCE

### FAMILY SCIENCE FESTIVALS AND FAMILY MUSEUM NIGHTS

Looking for a great way to engage your students and their families?

#### Family Museum Nights

*Selected Tuesday evenings, 6-8pm*

Bring your families to an evening in the Museum to experience the exhibits.

#### Family Science Festivals

*Selected Tuesdays, Wednesday and Thursdays*

Can't come to the Museum? Let our Festival staff come to you and set up activities for your students and families to enjoy.

Dates are limited: Contact Rebecca Reed at **817-255-9536** or email **[OutReach@fwmsm.org](mailto:OutReach@fwmsm.org)** for pricing and additional info.

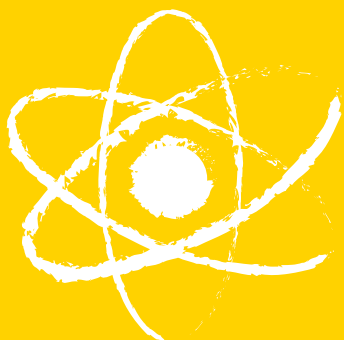
#### Distance Learning To Book:

For program descriptions and to register: **[connect2texas.net](http://connect2texas.net)**

To find our Museum click the Calendar of Programs and Register button. Choose the Fort Worth Museum of Science and History from the "Provider" pull down menu. Please schedule at least three weeks in advance.

**Fee:** \$140 for a 50-minute class which includes materials for 30 students.

**Questions?** We welcome your calls and emails: 817-255-9472 or **[distancelearning@fwmsm.org](mailto:distancelearning@fwmsm.org)**



## EVENTS YOU DON'T WANT TO MISS

Educator Evening in the Cultural District..... September 6, 5 - 8pm  
National Chemistry Week ..... October 23 - 27, 2018  
National Engineer's Week.....February 19 - 23, 2019

## EDUCATOR BENEFITS

### Exhibit Admission

Educators receive free exhibit admission to the Museum every time you visit! To receive your free admission you will be asked for proof of school affiliation at the Museum Box Office on the day of your visit. Free admission is for the educator only. This offer is valid for Pre-school through High School educators from private and public institutions. Please note: This does not include field trips with your students.

### Educator Memberships

Educators may purchase memberships at a 10% discount with proof of school affiliation. This offer extends to educators from Pre-school through High School of public and private institutions.

## DON'T FORGET TO SHOP TOO!

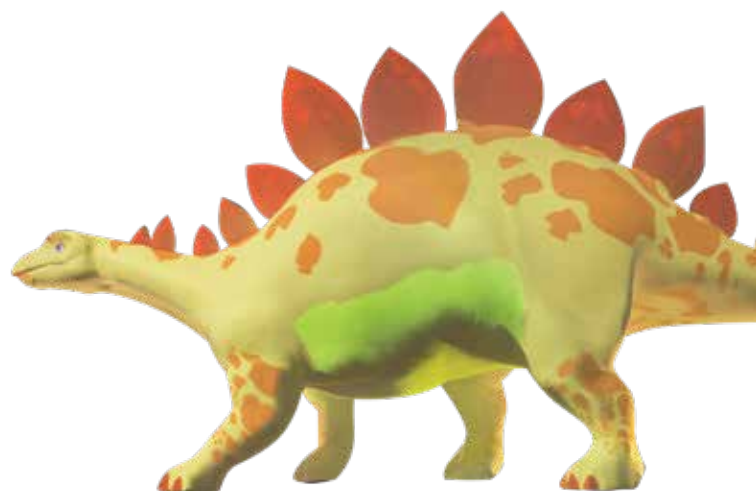
Preorder and prepay for your group's souvenir kits! Simply pick up your kits in the store the day of your visit.

### Shop Too!

Educators receive a 10% discount in Shop Too! Every time you shop with proof of school affiliation you will receive this discount. This offer extends to educators from Pre-school through High School of public and private institutions.

## REEL REFRESHMENTS

Reel Refreshments also offers group pricing on small bags of popcorn and a small drink. Add this special to your field trip and watch your students smile!





# CATTLE RAISERS MUSEUM



The Cattle Raisers Museum is dedicated to preserving and celebrating the vital history and science of the cattle industry. The Cattle Raisers Museum originally opened in 1981 in the Texas and Southwestern Cattle Raisers Association building on West 7th Street near downtown Fort Worth and moved to the Museum in November 2009.

Visit our exhibit to learn more about the cattle industry.

The Cattle Raisers Museum can also provide educational lectures for all ages on the history of cattle drives and the industry. Our educator will travel up to 100 miles from Fort Worth for your special event, classroom visit or career day.



Marta Torres  
Cattle Raisers Museum Educator  
817-255-9342  
[mtorres@fwmmsh.org](mailto:mtorres@fwmmsh.org)



# NATIONAL COWGIRL MUSEUM AND HALL OF FAME



## EXHIBITS

Visit the National Cowgirl Museum and Hall of Fame and discover the world of the cowgirl through interactive exhibits, film presentations, memorabilia and intriguing stories. The gallery downstairs features our newest permanent exhibit, *Hitting the Mark: Cowgirls and Wild West Shows*, which discusses early cowgirls and their significant roles in Wild West shows. Watch holographic Annie Oakley describe what it was like to travel with a Wild West show using her own words. Explore Western art through temporary exhibits in the new Anne W. Marion gallery, featuring different artists throughout the year.



## HIT THE TRAIL WITH OUR TRAIL PACKS PROGRAM

Enhance your next visit to the National Cowgirl Museum with a backpack from the new *Trail Packs* backpack program. Trail Packs are designed to create a more multisensory experience for your students with hands-on activities, games, and objects. Check them out at the front desk, they are free to use. These work well for small self-guided and homeschooling groups.

## DISCOVERY TRUNK: COWBOYS AND COWGIRLS

The National Cowgirl Museum has traveling trunks available to accommodate any grade-level and serve as wonderful educational tools for enhancing existing curriculum. Fee: \$25 refundable deposit

## PROFESSIONAL DEVELOPMENT

Get to know us better, and learn how we can help you meet your needs. Call our Education staff to help you plan a customized in-service program for your campus.

## FACTS AT A GLANCE

**To book:** 817-509-8960

**Fee:** \$3.50 per student

**Group Minimum:** 15 students

**Maximum:** 200 students

**Required Chaperones:**

Admitted free

PK-K: 1 adult/6 students

Grades 1-12: 1 adult/10 students

**Time frame options:** Tuesday-

Friday 10:00-11:30 am;

12:00-1:30 pm; 2:00-3:30 pm

## Student Group Reservations

Reservations may be made at least ten days in advance of your Museum visit by sending a fax to **817-336-2470**. Both a Student Group Reservation and a Guidelines Form must be completed and faxed. Please allow five business days for a receipt of confirmation.

**Reservation Forms:**

[www.cowgirl.net](http://www.cowgirl.net)



For additional information, contact:

National Cowgirl Museum  
and Hall of Fame

**817-509-8960**

[info@cowgirl.net](mailto:info@cowgirl.net)